

BlazeMaster® Fire Protection Fittings – STANDARD

FLANGES

Future Offering

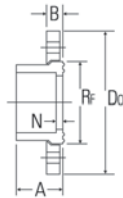
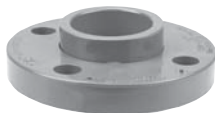
5019-H



Blind Flange – Solid

UNIV. FIG. NO.	NOM. SIZE	APPROX. NET WT./LBS.	DIM. G INCHES	DIM. OB INCHES
5019-H	3/4"	0.32	0.58	0.80
5019-H	1"	0.43	0.64	0.84
5019-H	1-1/4"	0.57	0.69	0.94
5019-H	1-1/2"	0.69	0.78	1.00
5019-H	2"	1.08	0.83	1.13
5019-H	2-1/2"	1.81	0.96	1.22
5019-H	3"	2.45	1.05	1.31

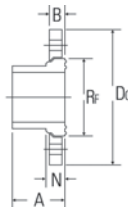
5051-A



Flange – Van Stone

UNIV. FIG. NO.	NOM. SIZE	APPROX. NET WT./LBS.	DIM. A INCHES	DIM. B INCHES	DIM. DO INCHES	DIM. RF INCHES	DIM. N INCHES	JOINT
5051-A	3"	1.75	2.41	0.99	7.50	4.81	0.50	S

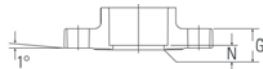
5051-2-A



Flange – Van Stone

UNIV. FIG. NO.	NOM. SIZE	APPROX. NET WT./LBS.	DIM. A INCHES	DIM. B INCHES	DIM. DO INCHES	DIM. RF INCHES	DIM. N INCHES	JOINT
5051-2-A	3"	1.82	3.05	0.99	7.50	4.81	1.16	SPG

5051-H



Flange – Solid

UNIV. FIG. NO.	NOM. SIZE	APPROX. NET WT./LBS.	DIM. G INCHES	DIM. N INCHES	JOINT
5051-H	3/4"	0.31	0.58	0.17	S
5051-H	1"	0.41	0.64	0.18	S
5051-H	1-1/4"	0.53	0.69	0.20	S
5051-H	1-1/2"	0.68	0.78	0.23	S
5051-H	2"	1.03	0.83	0.27	S
5051-H	2-1/2"	1.61	1.96	0.20	S
5051-H	3"	2.08	1.05	0.29	S

BlazeMaster®

Review – Do's & Don'ts

Do's

- Installation should be made only by a qualified installer or contractor in accordance with all applicable codes and requirements.
- Read and follow the installation instructions.
- Follow recommended safe work practices.
- Make certain that thread sealants, gasket lubricants, or firestop materials are compatible with CPVC.
- Keep pipe and fittings in original packaging until needed.
- Cover pipe and fittings with an opaque tarp if stored outdoors.
- Follow proper handling procedures.
- Use tools specifically designed for use with plastic pipe and fittings.
- Use the proper solvent cement and follow application instructions.
- Use a drop cloth to protect interior finishes.
- Cut the pipe ends square.
- Deburr and bevel the pipe end with a chamfering tool.
- Rotate the pipe 1/4 turn when bottoming pipe in fitting socket.
- Make certain no solvent cement is on sprinkler head and adapter threads.
- Make certain that solvent cement does not run and plug the sprinkler head orifice.
- Follow the manufacturer's recommended cure times prior to pressure testing.
- Fill lines slowly and only at a proper pressure.
- Bleed the air from the system prior to pressure testing.
- Support sprinkler head properly to prevent lift up of the head through the ceiling when activated.
- Keep threaded rod within 1/16" of the pipe or use a surge arrestor.
- Install NIBCO® **BlazeMaster**® CPVC Fire Sprinkler Products in wet systems only.
- Use only insulation and/or glycerin and water solutions for freeze protection.
- Allow for movement due to expansion and contraction.
- Ensure installers have been properly trained per the NIBCO **BlazeMaster**® CPVC Fire Sprinkler System Installation and Design Manual and renew your training every three years at a minimum.

Don'ts

- Do not use edible oils such as Crisco® as a gasket lubricant.
- Do not use petroleum or solvent-based sealants, lubricants, or fire stop materials.
- Do not use any glycol-based solutions as an anti-freeze.
- Do not contaminate the CPVC system with cutting oils or compressor oils.
- Do not mix glycerin and water solutions in contaminated containers.
- Do not use solvent cement that exceeds its shelf life or has become discolored or jellied.
- Do not allow solvent cement to plug the sprinkler head orifice.
- Do not connect rigid metal couplers to CPVC grooved adapters.
- Do not thread or groove CPVC pipe.
- Do not use solvent cement near sources of heat, open flame, or when smoking.
- Do not pressure test with air.
- Do not pressure test until recommended cure times are met.
- Do not exceed proper pressure for testing.
- Do not use ratchet cutters below 50°F.
- Do not use CPVC pipe that has been stored outdoors, unprotected and is faded in color.
- Do not allow threaded rod to come in contact with the pipe.
- Do not install NIBCO **BlazeMaster**® CPVC Fire Sprinkler Products in cold weather without allowing for expansion.
- Do not install NIBCO **BlazeMaster**® CPVC Fire Sprinkler Products in dry systems.
- Do not allow puddling of cement in fittings and pipe.
- Do not use dull or broken cutting tool blades when cutting pipe.

BlazeMaster®

CPVC Cross Reference Sheet

STANDARD FITTINGS

	NIBCO FIG. NO.	SIZE	SPEARS FIG. NO.	TYCO FIG. NO.
ADAPTER	5001-G	1-1/4"	4233-012	80160
	5001-G	1-1/2"	4233-015	80161
	5001-G	2"	4233-020	80162
	5001-G	2-1/2"	4233-025	80163
	5001-G	3"	4233-030	80164
BUSHINGS	5018	1"x3/4"	4237-131	80200
	5018	1-1/4"x1"	4237-168	80202
	5018	1-1/4"x3/4"	4237-167	80201
	5018	1-1/2"x1-1/4"	4237-212	80205
	5018	1-1/2"x1"	4237-211	80204
	5018	1-1/2"x3/4"	4237-210	80203
	5018	2"x1-1/2"	4237-251	80209
	5018	2"x1-1/4"	4237-250	80208
	5018	2"x1"	4237-249	80207
	5018	2"x3/4"	4237-248	80206
	5018	2-1/2"x2"	4237-292	80211
	5018	2-1/2"x1-1/2"	4237-291	80213
	5018	2-1/2"x1-1/4"	4237-290	80214
	5018	2-1/2"x1"	N/A	80215
	5018	3"x2-1/2"	4237-339	80212
	5018	3"x2"	4237-338	80210
	CAPS	5017	3/4"	4247-007
5017		1"	4247-010	80101
5017		1-1/4"	4247-012	80102
5017		1-1/2"	4247-015	80103
5017		2"	4247-020	80104
5017		2-1/2"	4247-025	80105
5017		3"	4247-030	80106
COUPLINGS	5001	3/4"	4229-007	80075
	5001	1"	4229-010	80076
	5001	1-1/4"	4229-012	80077
	5001	1-1/2"	4229-015	80078
	5001	2"	4229-020	80079
	5001	2-1/2"	4229-025	80080
	5001	3"	4229-030	80081
	5001-R	1"x3/4"	4229-131	80220
	5001-R	1-1/4"x1"	4229-168	N/A
	5001-R	1-1/2"x3/4"	4229-210	N/A
	5001-R	1-1/2"x1"	4229-211	N/A
5001-R	1-1/2"x1-1/4"	4229-212	N/A	
5001-R	2"x1"	4229-249	N/A	
5001-R	2"x1-1/2"	4229-251	N/A	
CROSSES	5035	3/4"	4220-007	80009
	5035	1"	4220-010	80010
	5035	1-1/4"	4220-012	80011

STANDARD FITTINGS

	NIBCO FIG. NO.	SIZE	SPEARS FIG. NO.	TYCO FIG. NO.	
CROSSES	5035	1-1/2"	4220-015	80012	
	5035	2"	4220-020	80013	
	5035	2-1/2"	4220-025	80014	
	5035	3"	4220-030	80008	
	5035-R	1"x3/4"x1"x3/4"	4220-131	80015	
ELBOWS	5006	3/4"	4217-007	80050	
	5006	1"	4217-010	80051	
	5006	1-1/4"	4217-012	80052	
	5006	1-1/2"	4217-015	80053	
	5006	2"	4217-020	80054	
	5006	2-1/2"	4217-025	80055	
	5006	3"	4217-030	80056	
	5007	3/4"	4206-007	80025	
	5007	1"	4206-010	80026	
	5007	1-1/4"	4206-012	80027	
	5007	1-1/2"	4206-015	80028	
	5007	2"	4206-020	80039	
	5007	2-1/2"	4206-025	80030	
	5007	3"	4206-030	80031	
	5007-R	1"x3/4"	4206-131	80032	
	5019-H	3/4"	4253-007	N/A	
	5019-H	1"	4253-010	N/A	
5019-H	1-1/4"	4253-012	N/A		
5019-H	1-1/2"	4253-015	N/A		
5019-H	2"	4253-020	N/A		
5019-H	2-1/2"	4253-025	N/A		
5019-H	3"	4253-030	N/A		
5051-A	3"	4254-030	N/A		
5051-2-A	3"	4256-030	N/A		
5051-H	3/4"	4251-007	N/A		
5051-H	1"	4251-010	N/A		
5051-H	1-1/4"	4251-012	N/A		
5051-H	1-1/2"	4251-015	N/A		
5051-H	2"	4251-020	N/A		
5051-H	2-1/2"	4251-025	N/A		
5051-H	3"	N/A	N/A		
FLANGES	5011	3/4"	4201-007	8000	
	5011	1"	4201-010	8001	
	5011	1-1/4"	4201-012	8002	
	5011	1-1/2"	4201-015	8003	
	5011	2"	4201-020	80004	
	5011	2-1/2"	4201-025	8005	
	5011	3"	4201-030	80006	
	5011-R	3/4"x3/4"x1"	4201-102	80132	
	5011-R	1"x1"x3/4"	4201-131	80260	
	TEES	5011	3/4"	4201-007	8000
		5011	1"	4201-010	8001
5011		1-1/4"	4201-012	8002	
5011		1-1/2"	4201-015	8003	
5011		2"	4201-020	80004	
5011		2-1/2"	4201-025	8005	
5011		3"	4201-030	80006	
5011-R		3/4"x3/4"x1"	4201-102	80132	
5011-R		1"x1"x3/4"	4201-131	80260	

BlazeMaster®

CPVC Cross Reference Sheet

STANDARD FITTINGS

	NIBCO FIG. NO.	SIZE	SPEARS FIG. NO.	TYCO FIG. NO.
TEES	5011-R	1"x3/4"x1"	4201-126	80134
	5011-R	1"x3/4"x3/4"	4201-125	80133
	5011-R	1-1/4"x1-1/4"x1"	4201-168	80262
	5011-R	1-1/4"x1-1/4"x3/4"	4201-167	80261
	5011-R	1-1/4"x1"x1-1/4"	4201-159	80137
	5011-R	1-1/4"x1"x1"	4201-158	80136
	5011-R	1-1/4"x1"x3/4"	4201-157	80135
	5011-R	1-1/4"x1-1/4"x1-1/2"	4201-169	80138
	5011-R	1-1/2"x1-1/2"x1-1/4"	4201-212	80275
	5011-R	1-1/2"x1-1/2"x1"	4201-211	80264
	5011-R	1-1/2"x1-1/2"x3/4"	4201-210	80263
	5011-R	1-1/2"x1-1/4"x1"	4201-202	80140
	5011-R	1-1/2"x1-1/4"x3/4"	4201-201	80140
	5011-R	1-1/2"x1-1/2"x2"	4201-213	N/A
	5011-R	2"x2"x1-1/2"	4201-251	80274
	5011-R	2"x2"x1-1/4"	4201-250	80267
	5011-R	2"x2"x1"	4201-249	80266
	5011-R	2"x2"x3/4"	4201-248	80265
	5011-R	2-1/2"x2-1/2"x2"	4201-292	80276
	5011-R	2-1/2"x2-1/2"x1-1/2"	4201-291	80273
	5011-R	2-1/2"x2-1/2"x1-1/4"	4201-290	80272
	5011-R	2-1/2"x2-1/2"x1"	4201-289	80271
	5011-R	3"x3"x2-1/2"	4201-339	80269
	5011-R	3"x3"x2"	4201-338	80268
	5011-R	3"x3"x1-1/2"	4201-337	80270
UNIONS	5033-E	3/4"	4257-007	N/A
	5033-E	1"	4257-010	N/A
	5033-E	1-1/4"	4257-012	N/A
	5033-E	1-1/2"	4257-015	N/A
	5033-E	2"	4257-020	N/A
	5033-E	2-1/2"	N/A	N/A
	5033-E	3"	N/A	N/A

THREADED FITTINGS

	NIBCO FIG. NO.	SIZE	SPEARS FIG. NO.	TYCO FIG. NO.	
ADAPTERS	5003-BI	3/4"	4235-007	80142	
	5003-BI	1"	4235-010	80145	
	5003-BI	1-1/4"	4235-012	80146	
	5003-BI	1-1/2"	4235-015	80147	
	5003-BI	2"	4235-020	80148	
	5003-2-BI	3/4"	4278-007	N/A	
	5003-2-BI	1"	4278-010	N/A	
	5003-S-BI	3/4"x1/2"	4235-101	80175E or 80175W	
	5003-S-BI	1"x1/2"	4235-130	80176E or 80175W	
	5003-S-BI	1"x3/4"	4235-131	80179	
	5003-2-S-BI	3/4"x1/2"	4238-101	N/A	
	5003-2-S-BI	1"x1/2"	4238-130	N/A	
	5004-BI	3/4"	N/A	80157	
	5004-BI	1"	N/A	80158	
CROSSES	5035-3-S-BI-S	1"x1"x1/2"x1/2"	N/A	80462	
	5035-3-S-BI-L	1"x1"x1/2"x1/2"	N/A	80463	
ELBOWS	5007-3-S-BI	3/4"x1/2"	4207-101	80199	
	5007-3-S-BI	1"x1/2"	4207-130	80198	
	5007-3-S-BI	1"x3/4"	4207-131	N/A	
	5007-3-S-BI	1-1/4"x1/2"	4207-166	N/A	
TEES	5011-3-3-S-BI-S	1/2"x1/2"x1"	N/A	80460	
	5011-3-3-S-BI-L	1/2"x1/2"x1"	N/A	80459	
	5012-S-BI	1"	4202-010	N/A	
	5012-S-BI	3/4"x3/4"x1/2"	4202-101	80250	
	5012-R-S-BI	1"x3/4"x1/2"	4202-124	N/A	
	5012-S-BI	1"x1"x1/2"	4202-130	80251	
	5012-R-S-BI	1"x1/2"x1"	4203-122	N/A	
	5012-R-S-BI	1-1/4"x1"x1/2"	4202-156	80256	
	5012-S-BI	1-1/4"x1-1/4"x1/2"	4202-166	80252	
	5012-R-S-BI	1-1/2"x1-1/4"x1/2"	4202-199	80257	
TEST PLUG	450-005	1/2"	4250-005	N/A	
	TCBR-3	3/4"	N/A	N/A	
	TCBR-3	1"	N/A	N/A	
	TCBR-3	1-1/4"	N/A	N/A	
	TCBR-3	1-1/2"	N/A	N/A	
	TCBR-3	2"	N/A	N/A	
	TCBR-3	3"	N/A	N/A	
	UNION CONNECTOR	TCBR-3	3/4"	N/A	N/A
		TCBR-3	1"	N/A	N/A
		TCBR-3	1-1/4"	N/A	N/A
TCBR-3		1-1/2"	N/A	N/A	
TCBR-3		2"	N/A	N/A	
TCBR-3		3"	N/A	N/A	

BlazeMaster®

NIBCO LIMITED WARRANTY

Applicable to NIBCO INC. CPVC FIRE PROTECTION Plastic Fittings

NIBCO INC. warrants each NIBCO **BlazeMaster**® Fire Protection CPVC plastic fitting to be free from defects in materials and workmanship under normal use and service for a period of ten (10) years from the date of purchase.

In the event any defect occurs which the owner believes is covered by this Warranty, the owner should immediately contact NIBCO INC., Technical Services, either in writing or by telephone call, (888) 446-4226 or (574) 295-3000. The owner will be instructed to return said fitting or valve, at the owner's expense, to NIBCO INC. or an authorized NIBCO INC. representative for inspection. In the event said inspection discloses to NIBCO INC.'s satisfaction that said fitting or valve is defective, a replacement shall be mailed free of charge to the owner, and NIBCO INC. shall further pay the installing contractor the sum of ten (\$10.00) dollars to apply on the cost of installation of said replacement fitting.

TO THE EXTENT PERMITTED BY LAW, THIS WARRANTY SPECIFICALLY EXCLUDES INCIDENTAL AND CONSEQUENTIAL DAMAGES OF EVERY TYPE AND DESCRIPTION RESULTING FROM ANY CLAIMED DEFECT IN MATERIAL OR WORKMANSHIP, INCLUDING BUT NOT LIMITED TO, PERSONAL INJURIES AND PROPERTY DAMAGES. Some states do not allow the exclusion or limitations of incidental or consequential damages, so these limitations may not apply to you. **TO THE EXTENT PERMITTED BY LAW, IMPLIED WARRANTIES OF MERCHANTABILITY AND FITNESS FOR A PARTICULAR PURPOSE ARE LIMITED IN DURATION.**

This Warranty gives you specific legal rights, and you may also have other rights which vary from state to state.

NIBCO® NIBCO INC. World Headquarters • 1516 Middlebury St. • Elkhart, IN 46516-4740 USA • www.nibco.com

how to order

NIBCO sells its products through select stocking distributors. Our distributors are knowledgeable about plastics fittings as well as the complete line of NIBCO Fire Protection Systems.

Please visit www.nibco.com for a complete listing of authorized NIBCO distributors in your area.

NIBCO INC. Customer Service
 World Headquarters
 1516 Middlebury Street
 P.O. Box 1167
 Elkhart, IN 46515-1167
 USA
 Phone: 800.234.0227
 Fax: 800.234.0557

To the best of our knowledge the information contained in this publication is accurate. However, NIBCO® does not assume any liability whatsoever for the accuracy or completeness of such information. Final determinations of the suitability of any information or product for the use to be contemplated is the sole responsibility of the user. The manner of that use, and whether there is any infringement of patents, is also the sole responsibility of the user.

BlazeMaster® is a registered trademark of The Lubrizol Corporation