

Σ SIGMA.

Piping Products – Fire, Plumbing, Industrial

Quality – Service – Commitment – Delivered

Welded

Σ SIGMA.



SIGMA Corporation

700 Goldman Drive
Cream Ridge, NJ 08514

281-987-1200
800-999-0109
spp-sales@sigmaco.com

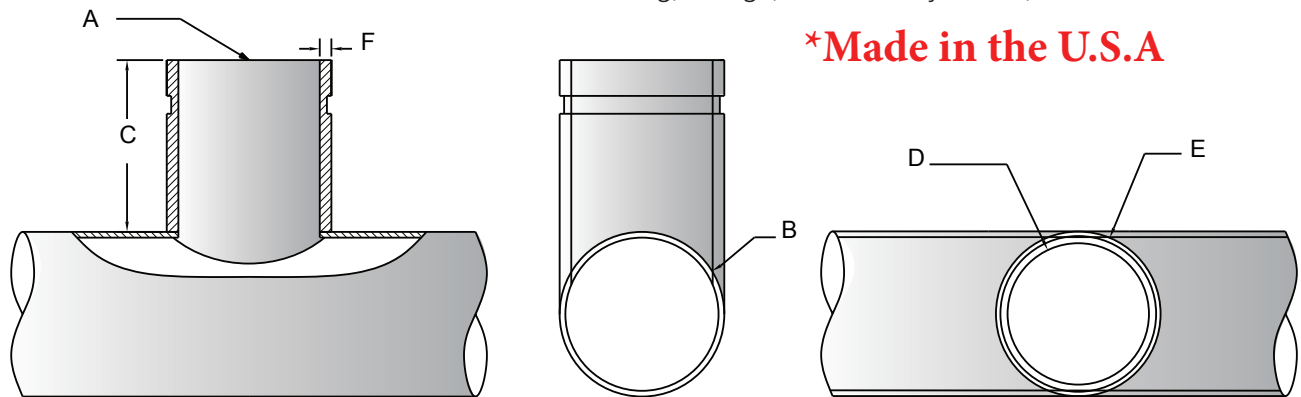
www.sigmaco.com

Welded

Grooved Welding Outlet

Description Roll Groove

- **MATERIALS:** Highly Weldable grade black carbon steel equal to or exceeding the requirements of the American Society for Testing and Materials Specifications A - 135,A-795,A-53.
- **U.L. / U.L.C. / F.M. WORKING PRESSURE:** Schedule 40 Cut Groove / up to 500 CWP in PSI Schedule 40 Roll Groove up to 300 CWP in PSI Pressures have been established using listed and/or approved couplings and fittings of equal or higher ratings. Hydrostatic test of 2:1 for maximum working pressure and 5:1 for strength of body. (4:1 for 8").
- **QUALITY ASSURANCE AND INSPECTION:** Dimensional integrity is assured with accurate machining, stringent quality control procedures, and sound fabrication techniques. Grooves, threads and bevels are constantly checked for proper alignment and concentricity, uniform depth, taper and degree, as applicable, conforming to established industry standards.
- **MARKING:** For identification, each fitting bears the name "ISLAND" or registered trademark, along with appropriate figure number and end preparation designation. In addition, the nominal outlet and header size in inches, and ◀FM▶ indicating listing and approval with recognized testing laboratories.
- **DESIGN:** Welded outlets are designed to provide unobstructed full flow. This is accomplished by making the inside diameter of the low weld volume machine coWntour precisely fit the outside diameter of the adjoining pipe/header to be welded. The full penetration weld is made forming a smooth passageway to prevent catching or clogging of foreign matter. Therefore, no special allowances are necessary when utilizing computer hydraulic flow calculations. Type 40 & 10 weld outlets are manufactured in a wide range of header sizes. Each fitting is manufactured "size on size". This means the outlet fits exactly on the header to which it is welded, so it is ideal for use with automatic welding machines.
- **FINISH:** Fittings are cleaned to bare metal internally and externally and protected with a smokeless rust inhibitor giving a lasting finish to extend shelf life.
- **PACKAGING:** For convenience in warehouse handling, storage, and inventory control, Schedule 40 and 10 fittings



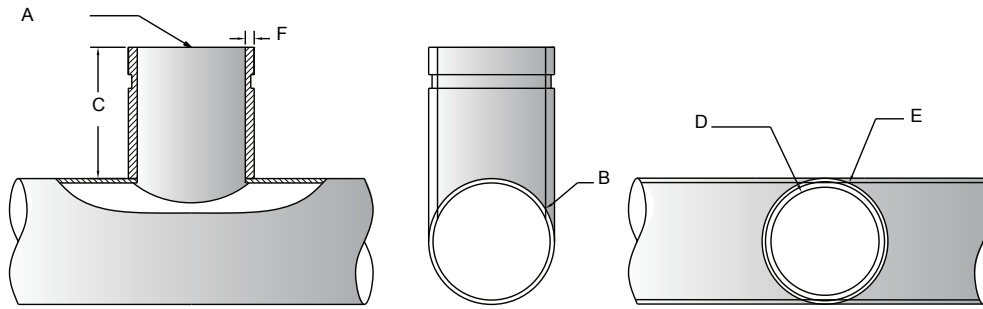
**SUPPLIER: ISLAND FITTING



NOM SIZE A X B	ITEM CODE	STANDARD LENGTH C	INSIDE DIAMETER D	OUTSIDE DIAMETER E	WALL THICKNESS F	ITEM WT.
2.5" X 2.5"	UL0117	3	2.635	2.875	0.120	1.00
2.5" X 3"	UL0118	3	2.635	2.875	0.120	1.00
2.5" X 4"	UL0119	3	2.635	2.875	0.120	1.00
2.5" X 6"	UL0120	3	2.635	2.875	0.120	1.00
2.5" X 8"	UL0121	3	2.635	2.875	0.120	1.00
3" X 3"	UL0122	4	3.260	3.500	0.120	1.20
3" X 4"	UL0123	4	3.260	3.500	0.120	1.20
3" X 6"	UL0124	4	3.260	3.500	0.120	1.20
3" X 8"	UL0125	4	3.260	3.500	0.120	1.20
4" X 4"	UL0126	4	4.260	4.500	0.120	2.10
4" X 6"	UL0127	4	4.260	4.500	0.120	2.10
4" X 8"	UL0128	4	4.260	4.500	0.120	2.10
6" X 6"	UL0129	4	6.357	6.625	0.134	3.80
6" X 8"	UL0130	4	6.357	6.625	0.134	3.80
6" X 8"	UL0131	4	8.329	8.625	0.188	6.20

Groove Welding Outlet

Description
Cut Groove

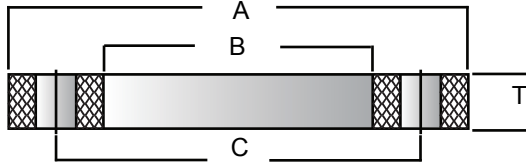


NOM SIZE A X B	ITEM CODE	STANDARD LENGTH C	INSIDE DIAMETER D	OUTSIDE DIAMETER E	WALL THICKNESS F	ITEM WT.
1.25" X 1.25"	UL0201	3	1.368	1.660	0.140	0.56
1.25" X 1.5"	UL0202	3	1.368	1.660	0.140	0.56
1.25" X 2"	UL0203	3	1.368	1.660	0.140	0.56
1.25" X 2.5"	UL0203A	3	1.368	1.660	0.140	0.56
1.25" X 3"	UL0204	3	1.368	1.660	0.140	0.56
1.25" X 4"	UL0204A	3	1.368	1.900	0.145	0.70
1.25" X 5"	UL0205	3	1.368	1.900	0.145	0.70
1.25" X 6"	UL0205A	3	1.368	1.900	0.145	0.70
1.25" X 8"	UL0205C	3	1.368	1.900	0.145	0.70
1.5" X 1.5"	UL0206	3	1.610	1.900	0.145	0.70
1.5" X 2"	UL0207	3	1.610	2.375	0.154	0.90
1.5" X 2.5"	UL0208	3	1.610	2.375	0.154	0.90
1.5" X 3"	UL0209	3	1.610	2.375	0.154	0.90
1.5" X 4"	UL0209A	3	1.610	2.375	0.154	0.90
1.5" X 5"	UL0210	3	1.610	2.375	0.154	0.90
1.5" X 6"	UL0210A	3	1.610	2.375	0.154	0.90
2" X 2"	UL0211	3	2.067	2.375	0.154	0.90
2" X 2.5"	UL0212	3	2.067	2.375	0.154	0.90
2" X 3"	UL0213	3	2.067	2.875	0.203	1.40
2" X 4"	UL0214	3	2.067	2.875	0.203	1.40
2" X 6"	UL0215	3	2.067	2.875	0.203	1.40
2" X 8"	UL0216	3	2.067	2.875	0.203	1.40
2.5" X 2.5"	UL0217	3	2.469	2.875	0.203	1.40
2.5" X 3"	UL0218	3	2.469	3.500	0.216	2.10
2.5" X 4"	UL0219	3	2.469	3.500	0.216	2.10
2.5" X 6"	UL0220	3	2.469	3.500	0.216	2.10
2.5" X 8"	UL0221	3	2.469	3.500	0.216	2.10
3" X 3"	UL0222	3	3.068	4.500	0.237	3.40
3" X 4"	UL0223	3	3.068	4.500	0.237	3.40
3" X 6"	UL0224	3	3.068	4.500	0.237	3.40
3" X 8"	UL0225	3	3.068	6.625	0.280	7.00
4" X 4"	UL0226	4	4.026	6.625	0.280	7.00
4" X 6"	UL0227	4	4.026	8.625	0.277	10.40
4" X 8"	UL0228	4	4.026			
6" X 6"	UL0229	4	6.065			
6" X 8"	UL0230	4	6.065			
6" X 8"	UL0231	4	7.981			

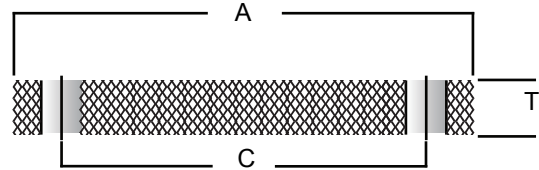
Steel Plate Flanges

- Bolts shall be smaller in diameter than the normal bolt hole diameter.
- Pressure rating at atmospheric temperature for sizes 2" - 12" is 175 psi.
- These flanges have the same diameter and drilling as class 125 Cast Iron flanges (ANSI B16.1).
- Minimum bolt lengths shall be the sum of the mating flange maximum thicknesses, the gasket, and the depth of the nut plus 1/8" (3.2mm) minimum before torquing. If threaded rods are used, they shall be the same length as the bolts determined previously, plus the depth of the nuts. Flanges conform to AWWA C207.

Description Slip-on & Reducing



Description Blind



NOM SIZE	ITEM CODE	OUTSIDE DIAMETER A	INSIDE DIAMETER B	BOLT CIRCLE C	THICKNESS T	NUMBER OF BOLTS REQUIRED	BOLT HOLE DIAMETER	ITEM WT.
SLIP-ON								
2"	1FLS0909	6	3	4.75	0.5	4	0.75	4.2
2 1/2"	1FLS1010	7	3	5.5	0.5	4	0.75	5.6
3"	1FLS1111	7.5	3.6	6	0.5	4	0.75	6.3
4"	1FLS1212	9	4.6	7.5	0.625	8	0.75	8.5
6"	1FLS1414	11	6.7	9.5	0.688	8	0.875	10.9
8"	1FLS1515	13.5	8.7	11.75	0.688	8	0.875	15.6
10"	1FLS1616	16	11	14.25	0.812	12	1	20
12"	1FLS1717	19	13	17	0.938	12	1	33.1
REDUCING								
2 1/2 X 2	1FLR1009	7	2.4	5.5	0.5	4	0.75	5.6
3 X 2	1FLR1109	7.5	2.4	6	0.5	4	0.75	6.3
3 X 2 1/2	1FLR1110	7.5	3.0	6	0.5	4	0.75	6.3
4 X 2	1FLR1209	9	2.4	7.5	0.625	8	0.75	8.5
4 X 2 1/2	1FLR1210	9	3.0	7.5	0.625	8	0.75	8.5
4 X 3	1FLR1211	9	3.6	7.5	0.625	8	0.75	8.5
6 X 2	1FLR1409	11	2.4	9.5	0.688	8	0.875	10.9
6 X 2 1/2	1FLR1410	11	3.0	9.5	0.688	8	0.875	10.9
6 X 3	1FLR1411	11	3.6	9.5	0.688	8	0.875	10.9
6 X 4	1FLR1412	11	4.6	9.5	0.688	8	0.875	10.9
8 X 3	1FLR1511	13.5	3.0	11.75	0.688	8	0.875	15.6
8 X 4	1FLR1512	13.5	4.6	11.75	0.688	8	0.875	15.6
8 X 6	1FLR1514	13.5	6.7	11.75	0.688	8	0.875	15.6
10 X 6	1FLR1614	16	6.7	14.25	0.812	12	1	20.0
10 X 8	1FLR1615	16	8.7	14.25	0.812	12	1	20.0
BLIND								
2"	1FLB0909	6	3	4.75	0.5	4	0.75	4.2
2 1/2"	1FLB1010	7	3	5.5	0.5	4	0.75	5.6
3"	1FLB1111	7.5	3.6	6	0.5	4	0.75	6.3
4"	1FLB1212	9	4.6	7.5	0.625	8	0.75	8.5
6"	1FLB1414	11	6.7	9.5	0.688	8	0.875	10.9
8"	1FLB1515	13.5	8.7	11.75	0.688	8	0.875	15.6
10"	1FLB1616	16	11	14.25	0.812	12	1	20
12"	1FLB1717	19	13	17	0.938	12	1	33.1

UniLet

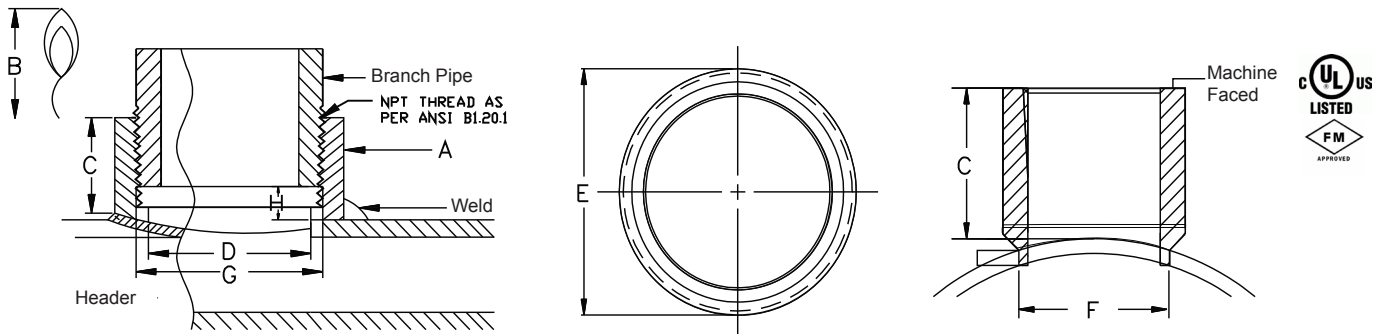
Threaded Welded Outlet - Import

UniLet welding outlets are manufactured by Sigma Piping Products from highly weldable steel which conforms to ASTM A 576/A 29. UniLets are designed specifically for use with automatic welding equipment. Threads are cut in accordance with ANSI B1.20.1 national standard for tapered threads.

FOR FIRE PROTECTION & OTHER LOW PRESSURE PIPING SYSTEMS: UniLets offer the user a high strength-low cost, forged threaded outlet specifically designed and manufactured to be installed on proprietary thin wall "FLOW PIPE", Schedule 10 and standard wall pipe.

- Only three 1" outlets are required to fit header sizes up to 8".
- Reduces stock numbers in inventory by reducing inventory
- Chill ring ensures proper positioning, speeds automatic welding, and helps prevent burn or weld through.
- Simplifies and reduces cost of inventory
- Only one 1/2" or 3/4" outlet is required to fit header sizes up to 8"

Description UniLet

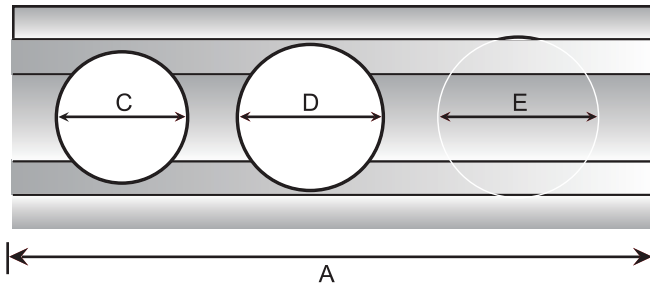


NOM OUTLET SIZE A	NOM HEADER SIZE B	ITEM CODE	TAKE OUT LENGTH C	INSIDE DIAMETER D	OUTSIDE DIAMETER E	BOTTOM DIAMETER F	HOLE SIZE G	MAKE UP H	ITEM WT.
1/2	1 1/4 - 8	UL0001N	1.063	0.700	1.063	0.858	0.875	0.531	0.1
3/4	1 1/4 - 8	UL0002N	1.125	0.900	1.315	1.055	1.063	0.562	0.15
1	1 1/4	D-SL031	1.25		1.57	1.156	1.186		
1	1 1/2 - 2 1/2	UL0003N	1.25	1.145	1.57	1.30	1.313	0.593	0.2
1	3 - 8	UL0004N	1.25	1.145	1.57	1.30	1.313	0.593	0.2
1 1/4	1 1/2 - 2	UL0005	1.375	1.480	1.90	1.605	1.625	0.687	0.4
1 1/4	2 1/2 - 8	UL0006	1.375	1.480	1.90	1.605	1.625	0.687	0.4
1 1/2	2 - 3	UL0007	1.625	1.610	2.105	1.735	1.75	0.937	0.5
1 1/2	4 - 8	UL0008	1.625	1.610	2.105	1.735	1.75	0.937	0.5
2	2 1/2 - 3	UL0009	1.75	2.067	2.620	2.192	2.25	1.062	0.8
2	4 - 8	UL0010	1.75	2.067	2.620	2.192	2.25	1.062	0.8

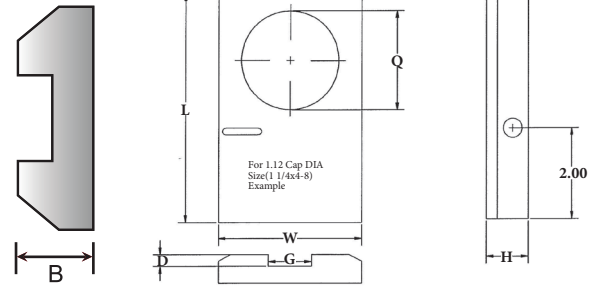
UniLet Template

Description
UniLet Template

1/2, 3/4, 1



1 1/4, 1 1/2, 2



SIZE	ITEM CODE	DESCRIPTION	A/L	B/H	C/Q	D/G	E/W
THERMAL DYNAMICS							
1.000	ULTEMP1	1/2, 3/4, 1	9.25	1.00	1.81	2.02	2.24
1.000	ULTEMP4	1 1/4 X 4 - 8	6.25	0.87	2.63	2.12	3.5
1.000	ULTEMP5	1 1/4 X 2 1/2 - 4	6.25	0.87	2.63	1.435	3.5
1.000	ULTEMP6	1 1/2 X 4 - 8	7.00	0.87	2.69	2.12	3.875
1.000	ULTEMP7	1 1/2 X 3 - 4	7.00	0.87	2.69	1.50	3.875
1.000	ULTEMP8	1 1/2 X 2 - 2 1/2	7.00	0.87	2.69	1.50	3.875
1.000	ULTEMP9	2 X 4 - 8	7.00	0.99	3.19	2.12	4.25
1.000	ULTEMP10	2 X 2 1/2 - 3	7.00	0.99	3.19	1.56	4.25
MILLER							
1.080	ULTEMP3	1/2, 3/4, 1	9.25	1.00	1.88	2.11	2.33
HYPERTHERM							
1.125	ULTEMP2	1/2, 3/4, 1	9.25	1.00	1.94	2.15	2.40
1.125	ULTEMP11	1 1/4 X 4 - 8	6.25	0.87	2.75	2.12	3.5
1.125	ULTEMP12	1 1/4 X 2 1/2 - 4	6.25	0.87	2.75	1.435	3.5
1.125	ULTEMP13	1 1/2 X 4 - 8	7.00	0.87	2.815	2.12	3.875
1.125	ULTEMP14	1 1/2 X 3 - 4	7.00	0.87	2.815	1.50	3.875
1.125	ULTEMP15	1 1/2 X 2 - 2 1/2	7.00	0.87	2.815	1.50	3.875
1.125	ULTEMP16	2 X 4 - 8	7.00	0.99	3.315	2.12	4.25
1.125	ULTEMP17	2 X 2 1/2 - 3	7.00	0.99	3.315	1.56	4.25

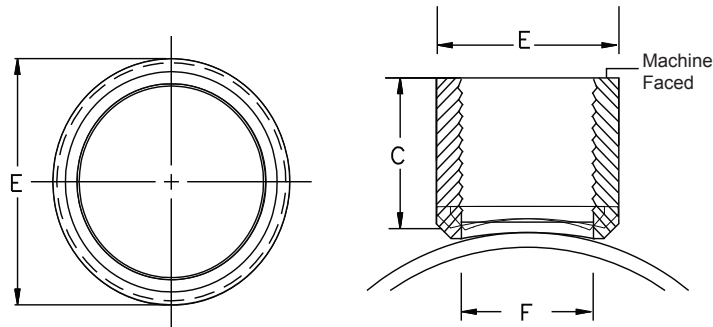
SigLet

Threaded Welded Outlet ***Made in the U.S.A**

SigLet welding outlets are manufactured by Sigma Piping Products from highly weldable steel which conforms to ASTM A 576/A 29. SigLets are designed specifically for use with automatic welding equipment. Threads are cut in accordance with ANSI B1.20.1 national standard for tapered threads.

FOR FIRE PROTECTION & OTHER LOW PRESSURE PIPING SYSTEMS: SigLets offer the user a high strength-low cost, forged threaded outlet specifically designed and manufactured to be installed on proprietary thin wall "FLOW PIPE", Schedule 10 and standard wall pipe.

Description SigLet



OUTLET SIZE	RUN SIZE	ITEM CODE	Dimension C	Dimension E	Dimension F	HOLE SIZE
1/2"	1 1/4" - 1 1/2"	D-SL011	1.059"	1.063"	0.71"	0.74"
1/2"	2" - 2 1/2"	D-SL012	1.059"	1.063"	0.71"	0.74"
1/2"	2 1/2" - 8"	D-SL013	1.059"	1.063"	0.71"	0.74"
3/4"	1 1/4" - 1 1/2"	D-SL021	1.125"	1.313"	0.917"	0.95"
3/4"	2" - 2 1/2"	D-SL022	1.125"	1.313"	0.917"	0.95"
3/4"	2 1/2" - 8"	D-SL023	1.125"	1.313"	0.917"	0.95"
1"	1 1/4"	D-SL031	1.25"	1.57"	1.156"	1.186"
1"	1 1/2"	D-SL032	1.25"	1.57"	1.156"	1.186"
1"	2" - 2 1/2"	D-SL033	1.25"	1.57"	1.156"	1.186"
1"	3" - 4"	D-SL034	1.25"	1.57"	1.156"	1.186"
1 1/4"	1 1/2"	D-SL042	1.351"	1.90"	1.48"	1.51"
1 1/4"	2" - 2 1/2"	D-SL044	1.359"	1.90"	1.48"	1.51"
1 1/4"	3" - 4"	D-SL045	1.362"	1.90"	1.48"	1.51"
1 1/2"	2"	D-SL052	1.426"	2.105"	1.635"	1.66"
1 1/2"	2 1/2"	D-SL053	1.511"	2.105"	1.635"	1.66"
1 1/2"	3"	D-SL054	1.573"	2.105"	1.635"	1.66"
1 1/2"	4"	D-SL055	1.619"	2.105"	1.635"	1.66"
1 1/2"	6" - 8"	D-SL056	1.619"	2.105"	1.635"	1.66"
2"	2 1/2"	D-SL062	1.283"	2.62"	2.113"	2.143"
2"	3"	D-SL063	1.408"	2.62"	2.113"	2.143"
2"	4"	D-SL064	1.513"	2.62"	2.113"	2.143"
2"	6"	D-SL066	1.615"	2.62"	2.113"	2.143"
2"	8"	D-SL067	1.662"	2.62"	2.113"	2.143"

*We reserve the right to substitute for another manufacturers domestic threaded outlet.

***Made in the U.S.A**

www.sigmaco.com

Welded

LOCATIONS

Corporate Head Quarters

Cream Ridge, NJ
Phone (800) 999-0109
Fax (281) 987-0200
spp-sales@sigmaco.com

Southeast & Eastern Regions

Alexander City, AL
Phone (800) 999-0109
Fax (281) 987-0200
spp-sales@sigmaco.com

Western Region

Ontario, CA
Phone (800) 999-0109
Fax (281) 987-0200
spp-sales@sigmaco.com

Auburn, WA
Phone (800) 999-0109
Fax (281) 987-0200
spp-sales@sigmaco.com

Southwest & Midwest Regions

Houston, TX
Phone (800) 999-0109
Fax (281) 987-0200
spp-sales@sigmaco.com

www.sigmaco.com

Terms and Conditions of Sales available at our website.

Threaded Fittings



- Black Malleable Iron (3/8" - 4") - 300psi, CL150
- Galvanized Malleable Iron (3/8" - 4") - 300psi CL150
- Cast Iron (1" - 2-1/2") - 300psi, CL150
- Ductile Iron (1" - 2") - 500psi, CL150
- UL Listed
- FM Approved

Steel Pipe Nipples Domestic and Import



- Schedule 40 Carbon Steel, Welded
- 66- Nipple Pack (1/2" and 3/4")
- Black Steel (1/4" - 6")
- Galvanized Steel (1/4" - 6")
- Conforms to ASTM A53
- Conforms to ANSI/ASME B.120.1

Welded Products Domestic and Import



- UniLet Import Threaded Weld Outlet (1/2" - 2")
- SigLet Domestic Threaded Weld Outlet (1/2" - 2")
- Grooved Welding Outlet (1-1/2" - 8")
- Welding Templates for Uni-Let
- Plate Flanges
- ULListed
- FM Approved

Indicator Posts



- Vertical Indicator Posts
- Wall Mounted Indicator Posts
- UL Listed
- FM Approved

Gate Valves



- Mechanical Joint, non rising stem (4" - 12")
- Flanged Joint, non rising stem (4" - 12")
- Flanged Joint, OS&Y .PIV (4" - 12")
- 300psi working pressure
- UL Listed
- FM Approved

Fire Valves



- Butterfly - Grooved or Wafer (2-1/2" - 8")
- Threaded Brass ball valves (1/2" - 2")
- Double door check valves (4" - 12")
- UL Listed
- FM Approved

Cast Iron Flanged Fittings



- Cast Iron / Ductile Iron Flanged (2" - 12")
- ANSI/AWWA C110/A21.10
- Bare, Cement Lined, Special coatings and Linings
- 250psi
- UL/FM